

Get inspired by  CARPETS



## About Fletco Carpets

Fletco Carpets is one of Europe's leading manufacturers of commercial carpets to the contract market. Our story goes back more than 70 years and today, we are a modern company focusing on product development, technological innovation and efficient, eco-friendly production. All our carpets including backings, are manufactured and quality controlled at our state-of-the-art production facility located in the heart of Denmark. High quality and longevity are key words to our carpets, and behind each product lies the ambition to produce the best product that exceeds the industry quality standards.

### **We care about the environment and people**

Our carpets are manufactured using 100% renewable wind energy and our felt backings are made of recycled bottles (rPet). Fletco carpets are 100% free of bitumen, PVC and Latex. Your guarantee for low VOC's and improved indoor air comfort.

For more information: [www.fletcocarpets.com](http://www.fletcocarpets.com)

## Table of contents

4	Quattro
6	Højer Kontrakt® Original
8	Uno
10	Chain
12	Duo
14	Couture
16	Nove
18	COM 1000
20	Nordic
22	Penta & Penta Stripe
24	Ex-Dono Quartet
26	Nordic Living
28	Zenith
30	Sebastian Wrong by Fletco®
34	Art Weave by Fletco®
40	Layers by Sebastian Wrong
42	Lock-Tiles®
44	ZigZag-Tiles®
46	Caring for the next generation
46	Eurofins Gold certified

*The shown colours in this catalogue are representative and may vary from the actual product.*

# Quattro

The high weaving structure in combination with the distinct pattern of Quattro offers a soft impression of the strong and durable carpet. Available in 12 contemporary colors. Custom colors from +400 m<sup>2</sup>.

Selected references:

**National Library of Lithuania**  
Vilnius, Lithuania (Public Buildings)

**Deutsche Rentenversicherung**  
Berlin, Germany (Corporate)

**PFA Pension**  
Copenhagen, Denmark (Corporate)

© Broadloom 400 cm width

100% PA 6.6 Ascend Ultron®

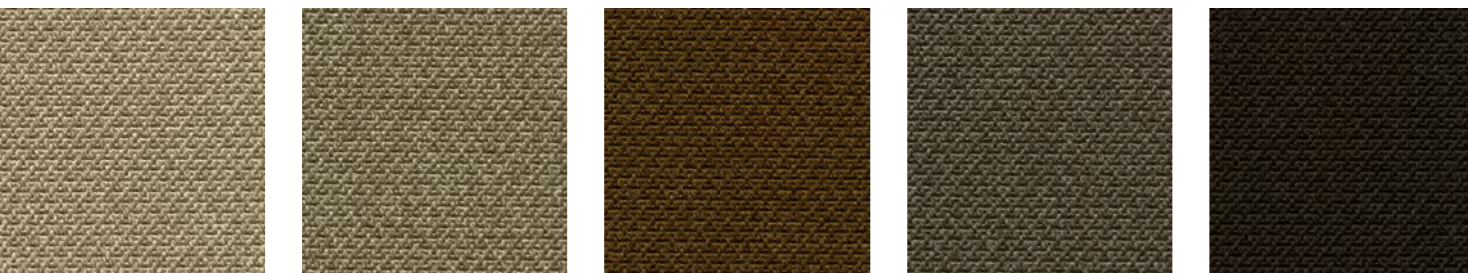
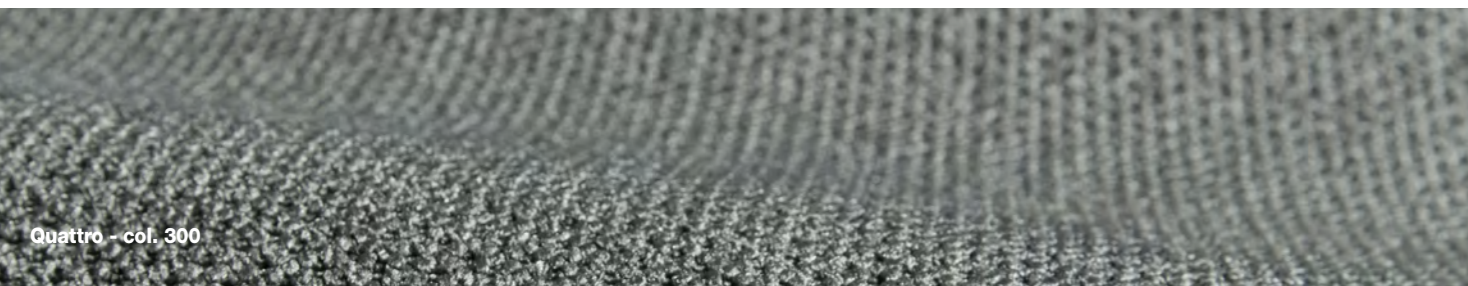
100% free of Bitumen, PVC  
and Latex

Continued dyed

33 Commercial – heavy

rPET Textile or felt backing

Find technical details on  
[www.fletcocarpets.com](http://www.fletcocarpets.com)



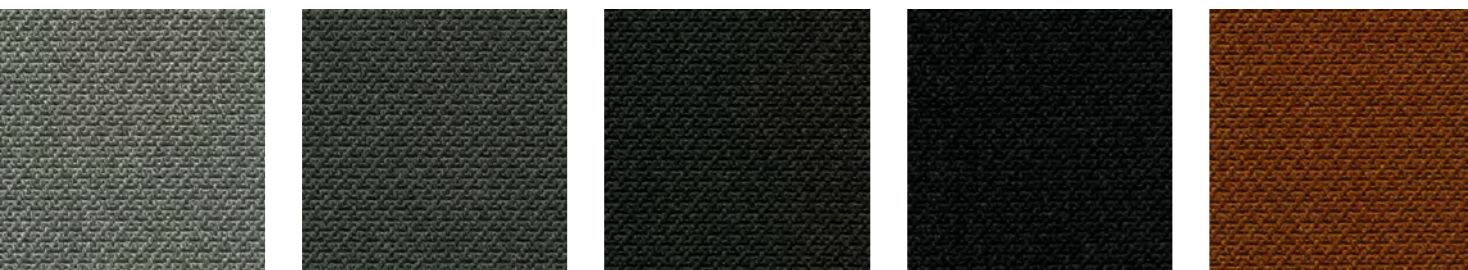
396100

396150

396240

396250

396280



396300

396350

396380

396390

396480



396680

396740



# Højer Kontrakt® Original

Manufactured of high quality New Zealand wool since 1899. The mélangé effect in hang-dyed yarn enhances the natural look of the wool, particularly in the beige and grey tones. The remaining colors are slightly more saturated in their expression. Available in 12 standard classic colors. Custom color from +400 m<sup>2</sup>.

## Selected references:

**A.P. Møller Mærsk Headquarter**  
Copenhagen, Denmark (Corporate)

**Novozymes**  
Bagsværd, Denmark (Corporate)

**Unilever**  
Rotterdam, Netherlands (Corporate)

**IKEA of Schweden**  
Ålmhult, Sweden (Corporate)

**Finans Danmark**  
Copenhagen, Denmark (Corporate)

**The Royal Danish Library**  
Copenhagen, Denmark (Public)

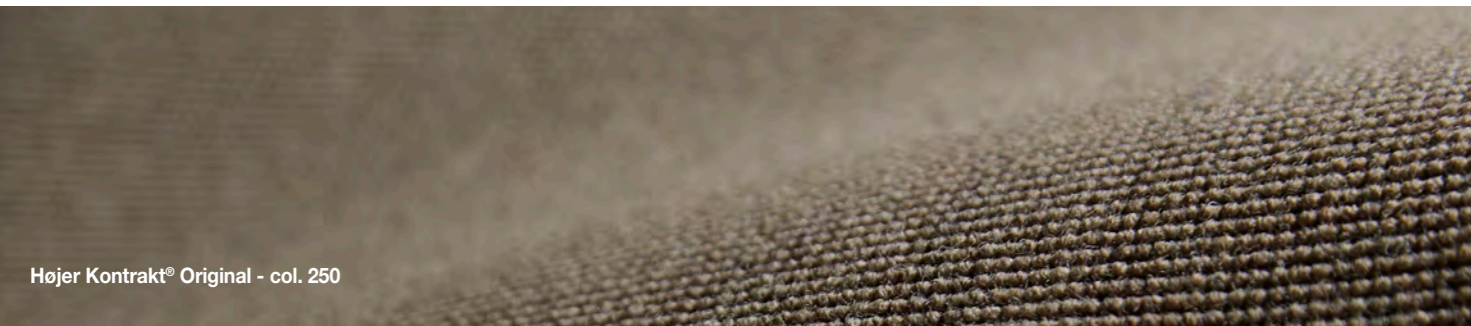
© Broadloom 400 cm width

80% pure New Zealand new wool  
20% polyamide

100% free of Bitumen, PVC  
and Latex

33 Commercial – heavy

Find technical details on  
[www.fletcocarpets.com](http://www.fletcocarpets.com)



Højer Kontrakt® Original - col. 250



Højer Kontrakt® Original - col. 300

# Uno

The idea behind UNO was to create a carpet, understated and subtle in structure, and offer a large standard color palette, allowing the designer to choose a flooring solution that underlines the remaining design elements of the space. Available in 37 colors from stock. Custom colors from +400 m<sup>2</sup>. Find technical details on [www.fletcocarpets.com](http://www.fletcocarpets.com)

## Selected references:

**Siemens**  
Vejle, Denmark (Corporate)

**Technische Universität Bergakademie**  
Freiberg, Germany (Public)

**PWC**  
Hellerup, Denmark (Corporate)

**Freie Universität**  
Berlin, Germany (Public Buildings)

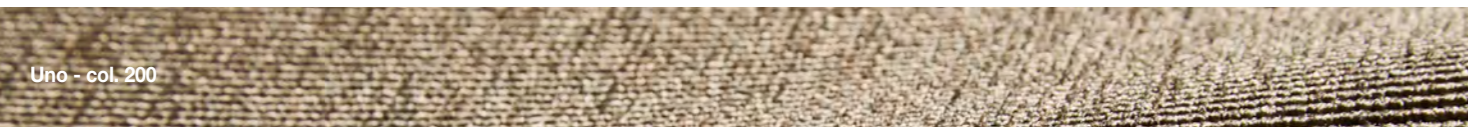
© Broadloom 400 cm width

100% PA 6.6 Ascend Ultron®

100% free of Bitumen, PVC and Latex

Continued dyed

33 Commercial – heavy



# Chain

Inspired by an anchor chain and made of 100% recycled Econyl®. The high weaving structure used in the design gives a softer impression. CHAIN is available in a choice of 16 contemporary standard colors. Custom colors from +400 m².

Selected references:

**VOLT Fashion**  
Norway (Corporate)

**VOLT Fashion**  
Sweden (Corporate)

**Hotel und Bräuereigasthof Hirsch**  
Sonthofen, Germany (Hospitality)

© Broadloom 400 cm width

100% PA 6.0 Econyl®

100% free of Bitumen, PVC  
and Latex

Continued dyed

33 Commercial – heavy

Find technical details on  
[www.fletcocarpets.com](http://www.fletcocarpets.com)



Chain - col. 770



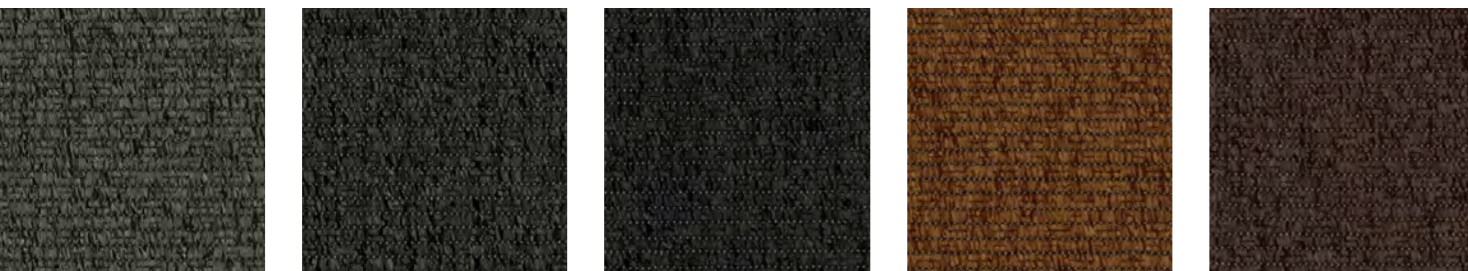
349120

349160

349270

349300

349330



349350

349360

349370

349470

349670



349770

349850



Chain - col. 670

# Duo

Introduced as a design alternative to the popular UNO, and based on the same principles. A simple and tight looking carpet structure with a large standard color palette, allowing the designer to choose a flooring solution that underlines the remaining design elements of the space. Available in 37 colors from stock. Custom colors from +200 m<sup>2</sup>. Find technical details on [www.fletcocarpets.com](http://www.fletcocarpets.com).

## Selected references:

**Deutsche Bahn Projekt GmbH**  
Duisburg, Germany (Corporate)

**Newmor Polska**  
Warsaw, Poland (Corporate)

**Deutsche Bahn**  
Dresdewn, Germany (Corporate)

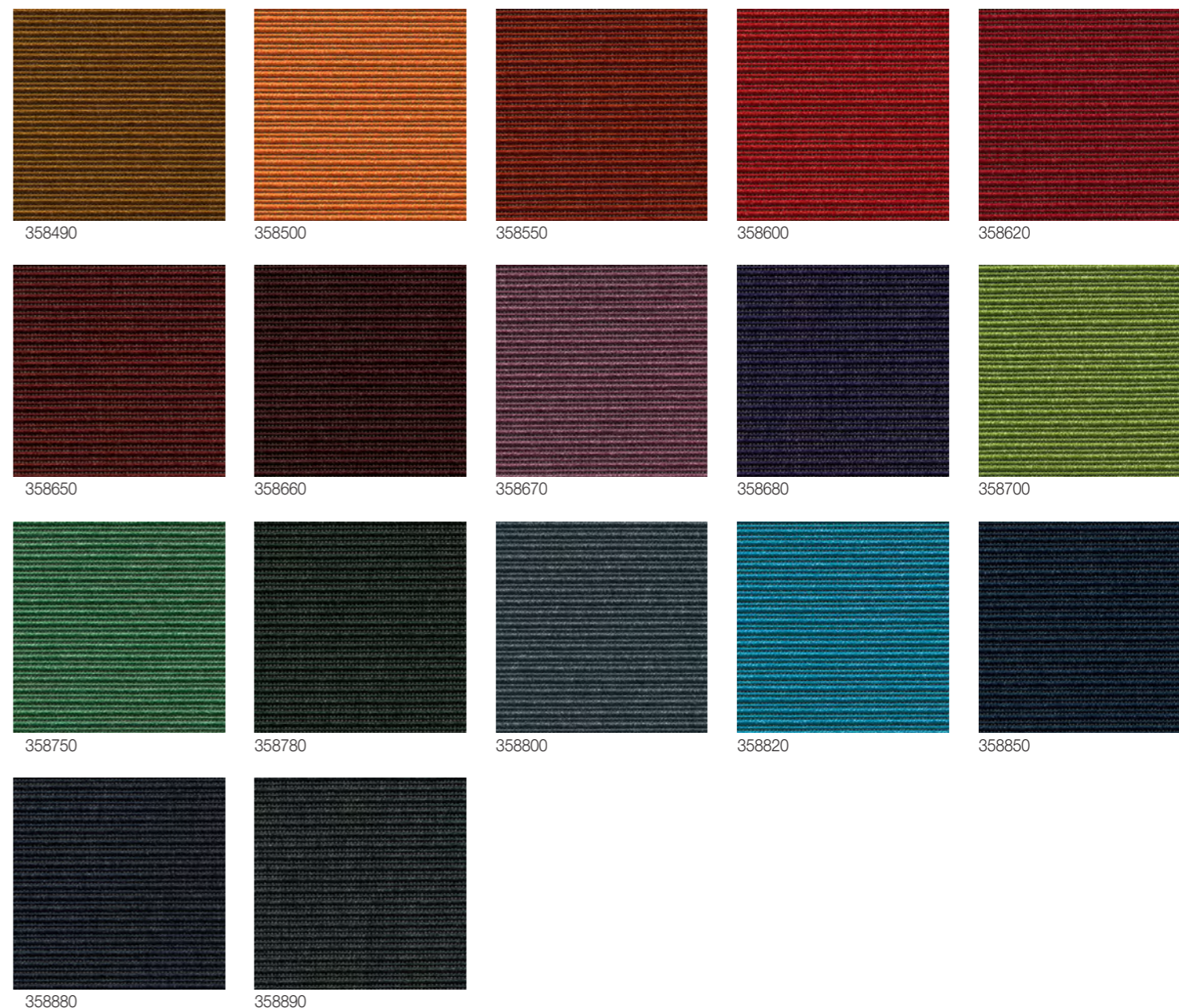
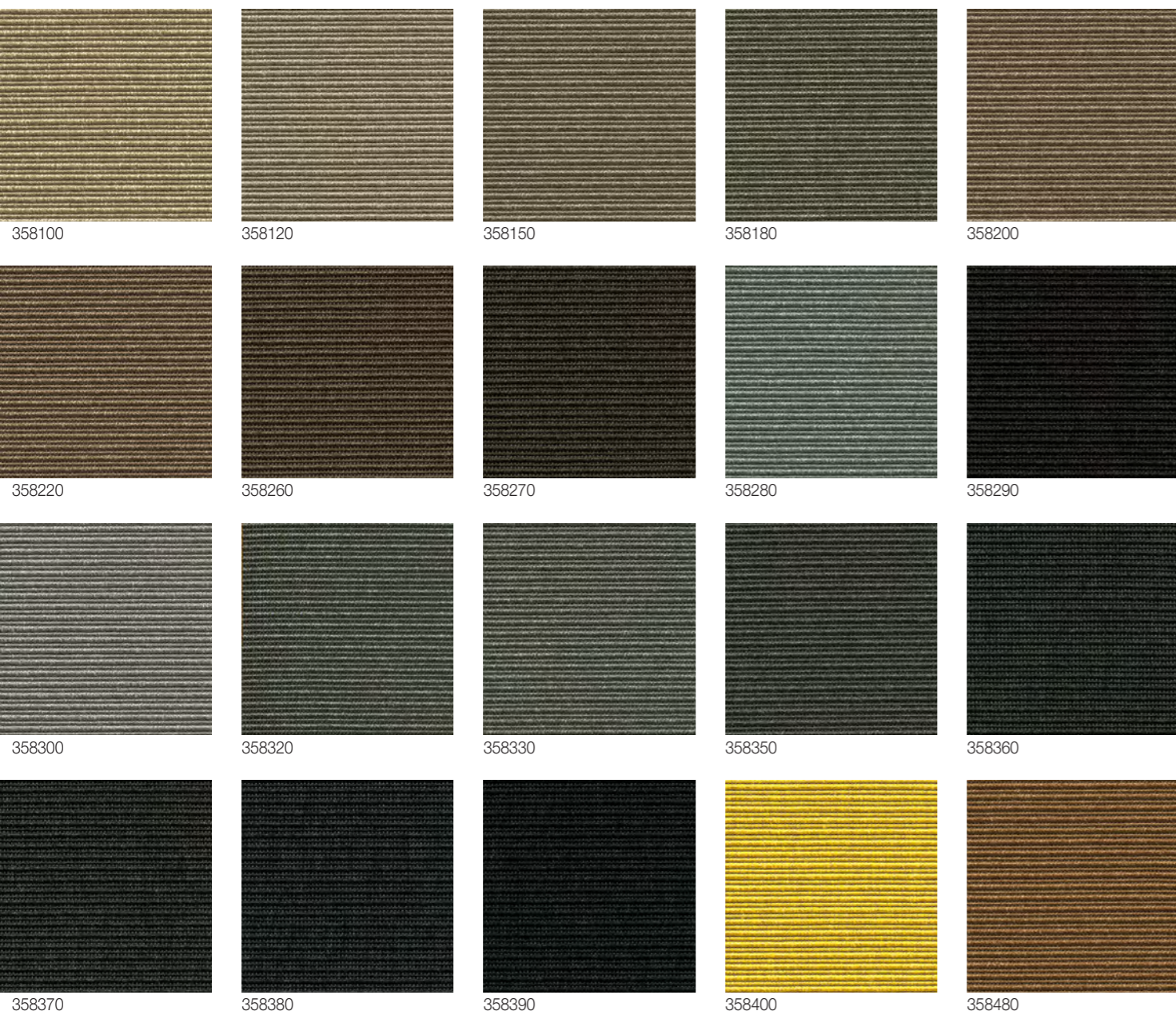
© Broadloom 400 cm width

100% PA 6.6 Ascend Ultron®

100% free of Bitumen, PVC and Latex

Continued dyed

33 Commercial – heavy



# Couture

The luxurious feel of the Couture velour carpet is noticeable. This carpet has exceptional acoustic benefits and is available from stock in a range of 16 colors. Custom colors from +400 m<sup>2</sup>.

Selected references:

**Museum of Fine Arts**  
Houston, USA

© Broadloom 400 cm width

100% PA 6.6  
Antron® Carpet fibre

100% free of Bitumen, PVC  
and Latex

Continued dyed

31 Commercial – moderate

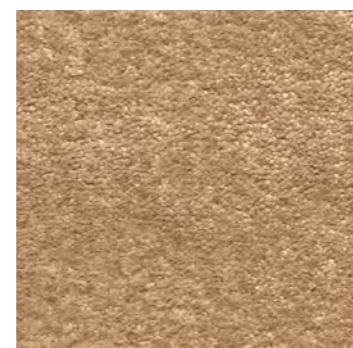
Find technical details on  
[www.fletcocarpets.com](http://www.fletcocarpets.com)



367050



367100



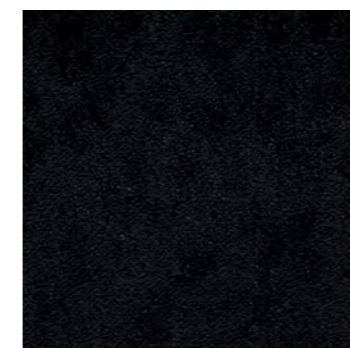
367150



367160



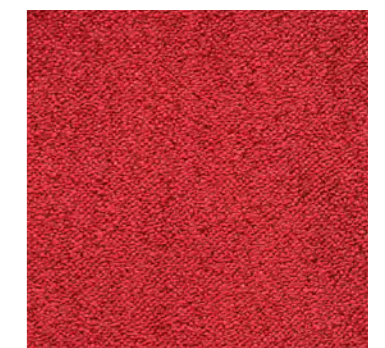
367350



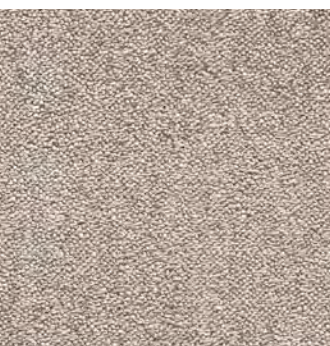
367390



367450



367600



367200



367250



367280



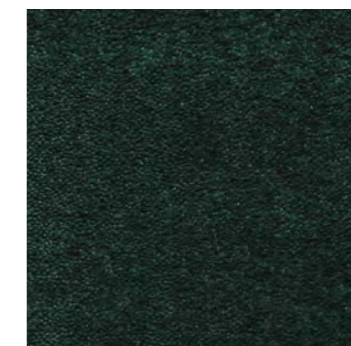
367300



367630



367650



367780



367850



# Nove

A subtle and modern interpretation of the classic herringbone design available in 14 delicate colors. Custom colors from +400 m<sup>2</sup>.

Selected references:

**Rathaus**  
Schwabhausen, Germany (Public)

**Hendriksholm Kirke**  
Rødovre, Denmark (Public)

© Broadloom 400 cm width

100% PA 6.6 Ascemd Ultron®

100% free of Bitumen, PVC and Latex

Continued dyed

33 Commercial – heavy

Textile or felt backing

Find technical details on  
[www.fletcocarpets.com](http://www.fletcocarpets.com)



460100



460120



460250



460300



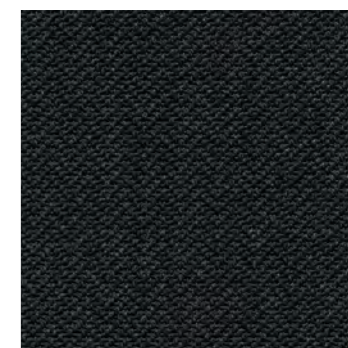
460310



460320



460330



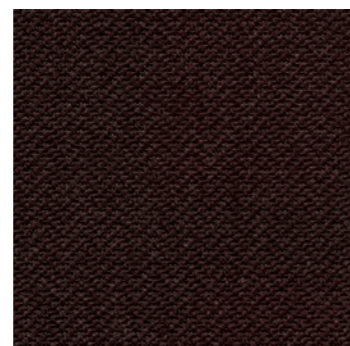
460340



460390



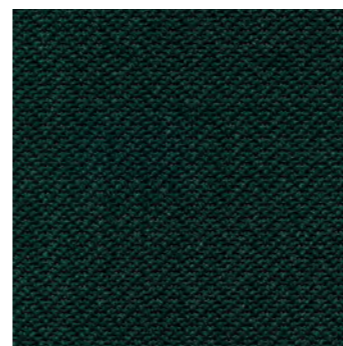
460400



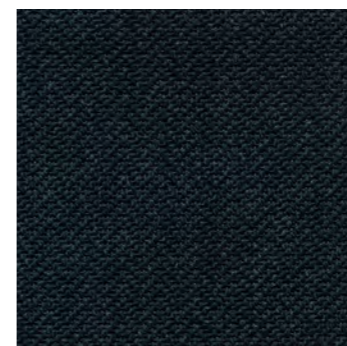
460650



460720



460750



460850

# COM 1000

An extremely strong flat woven carpet in a strict and simple design. The low pile height in combination with an outstanding dimensional stability enable us to offer this particular design in our patented LockTiles® cut.

COM 1000 is made of solution dyed and can therefore withstand extraordinary cleaning requirements.

With LockTiles® you can obtain nearly invisible joints and get the advantages of carpet tiles but the calm look of a broadloom. Available from stock in a range of 10 different colors. Custom colors upon inquiry.

For more information on LockTiles® and ZigZag - see pages 42-45.

Selected references:

**NRE Group A/S**  
Ikast, Denmark (Corporate)

**CPH Airport**  
Kastrup, Denmark (Corporate)

**NBBO**  
Drammen, Norway (Corporate) (LockTiles®)

**Novo Nordisk**  
Kalundborg, Denmark (Corporate)

**Borislavka Centrum**  
Prague, the Czech Republic (Corporate) (ZigZag)

© Broadloom 400 cm width

■ Laser cut tiles 50 x 50 cm

100% PA 6.6

100% free of Bitumen, PVC and Latex

Solution dyed

33 Commercial – heavy

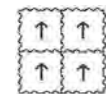
Pass class 33 wear test 6x

Find technical details on [www.fletcocarpets.com](http://www.fletcocarpets.com)

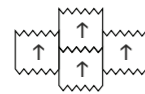
## Installation:



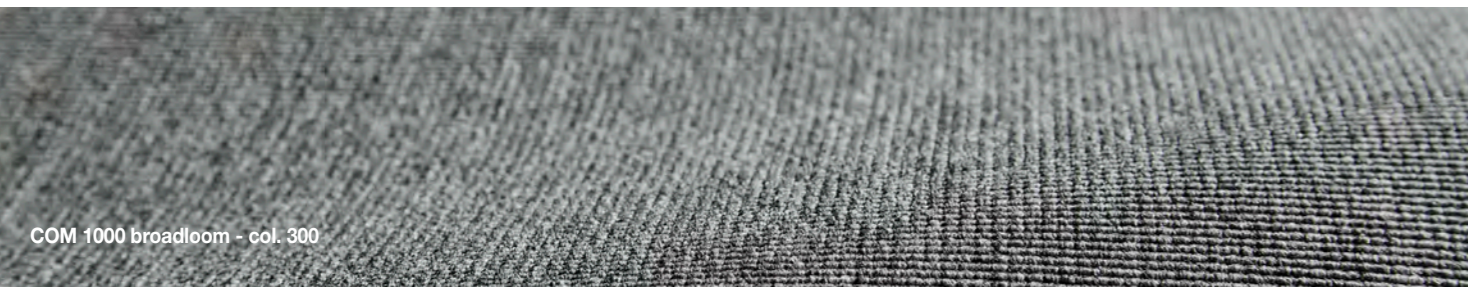
Recommended stocked



Produced to order only



Produced to order only



COM 1000 broadloom - col. 300



328160 / T328160



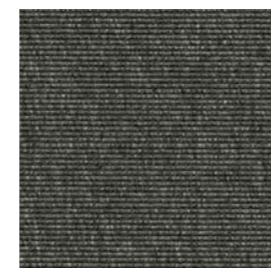
328220 / T328220



328260 / T328260



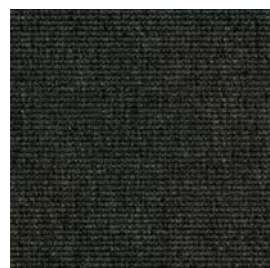
328300 / T328300



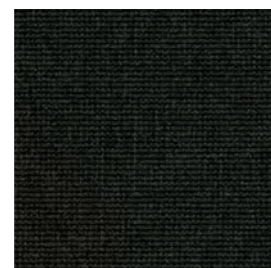
328330 / T328330



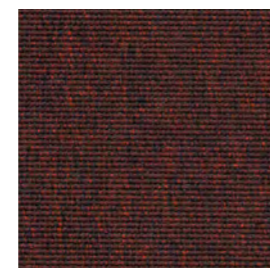
328350 / T328350



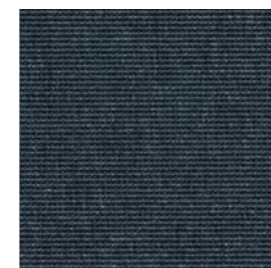
328370 / T328370



328390 / T328390



328650 / T328650



328850 / T328850



COM 1000 tile - col. 850

# Nordic

Similar to COM 1000 in its simple design but made of the stronger and more resilient Nylon 6.6. The low pile height in combination with an outstanding dimensional stability that enable us to also offer this particular design in our patented LockTiles® cut. With LockTiles® you can obtain nearly invisible joints and get the advantages of carpet tiles but the calm look of a broadloom. Available from stock in a range of 18 different colors. Custom colors from +400 m².

For more information on LockTiles® and ZigZag - see pages 42-45.

## Selected references:

**Sony Center**  
Berlin, Germany (Corporate)

**University of Augsburg**  
Augsburg, Germany (Education)

**PWC CityLife / Liebeskind Tower**  
Milano, Italy (Corporate) (LockTiles®)

**Humboldt Forum im Berliner Schloss**  
Berlin, Germany (Public)

**Potsdam Institut für Klimafolgenforschung**  
Potsdam, Germany (Corporate)

**Balluff Neuhausen a.d.**  
Fildern, Germany (Public) (LockTiles®)

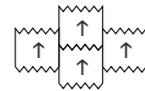
## Installation:



Recommended stocked



Produced to order only



Produced to order only



© Broadloom 400 cm width

■ Laser cut tiles 50 x 50 cm

100% PA 6.6 Ascend Ultron®

100% free of Bitumen, PVC and Latex

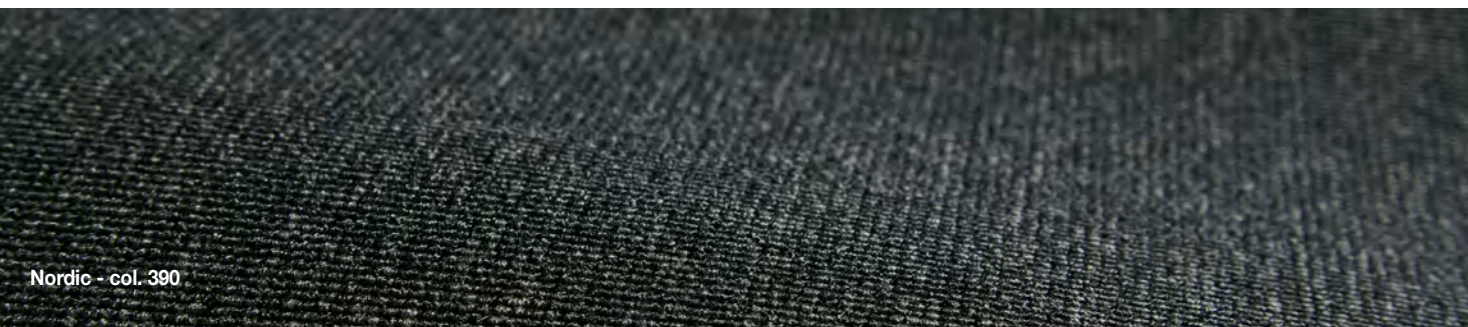
Continued dyed

33 Commercial – heavy

Find technical details on [www.fletcocarpets.com](http://www.fletcocarpets.com)



Nordic broadloom - col. 320



Nordic - col. 390



394100 / T394100

394120 / T394120

394150 / T394150

394200 / T394200

394220 / T394220



394240 / T394240



394250 / T394250



394290 / T394290



394300 / T394300



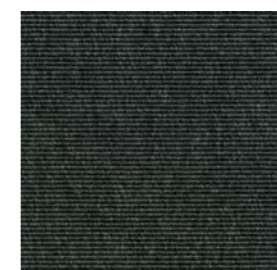
394320 / T394320



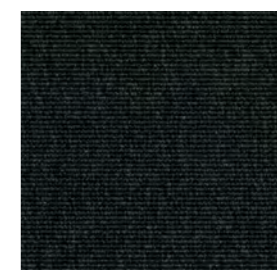
394340 / T394340



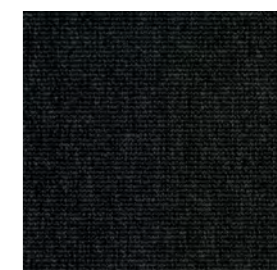
394350 / T394350



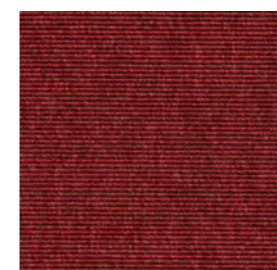
394360 / T394360



394390 / T394390



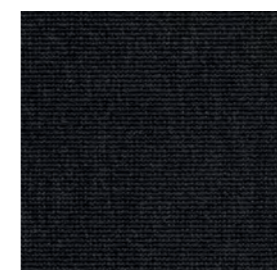
394395 / T394395



394600 / T394600



394680 / T394680



394890 / T394890

# Penta & Penta Stripe

A classic loop pile in a sustainable version available as broadloom and carpet tiles. It may look like any other classic loop pile, but the carpet is in fact composed of four layers, each individual layer carefully selected with focus on sustainability, product weight and indoor air comfort. With felt backing made of recycled bottles (rPet). Penta is available in six colors and Penta Stripe in five colors. Custom colors upon inquiry.

## Selected references:

**Næstved Varmeværk**  
Næstved, Denmark (Corporate)

## Recommended installation:



© Broadloom 400 cm width

■ Tiles 50 x 50 cm

100% PA 6.0

100% free of Bitumen, PVC and Latex

Solution dyed

33 Commercial – heavy

EcoTEX®/EcoTiles® backing

Find technical details on [www.fletcocarpets.com](http://www.fletcocarpets.com)



Penta - Tiles col. 260



Penta - col. 260



327220



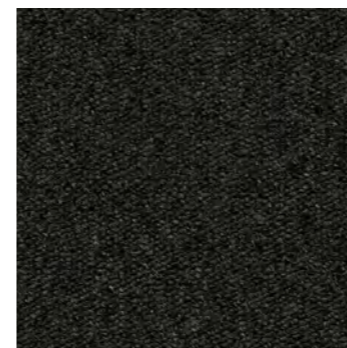
327260



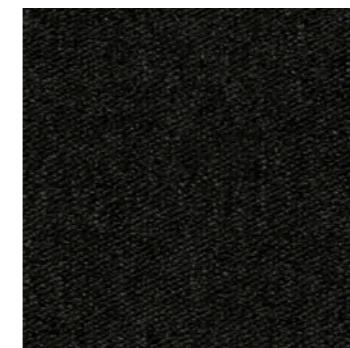
327330



327350



327370



327390



327901



327902



327903



327904



327905

# Ex-Dono Quartet

The hardwearing tufted loop pile carpet Ex-Dono Quartet is available in a choice of 16 elegant colors. The colors are muted tone-on-tone giving the carpet a mottled look. Good acoustic properties. Custom colors from +400 m<sup>2</sup>.

Selected references:

**Technisches Finanzamt**  
Berlin, Germany (Corporate)

**DSB**  
Høje Taastrup, Denmar (Corporate)

© Broadloom 400 cm width

100% PA 6.6

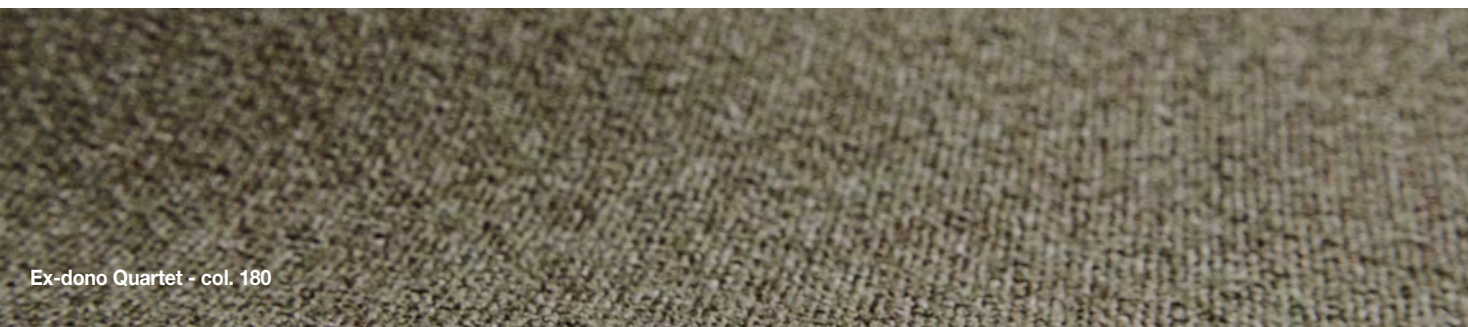
100% free of Bitumen, PVC  
and Latex

Continued dyed

33 Commercial – heavy

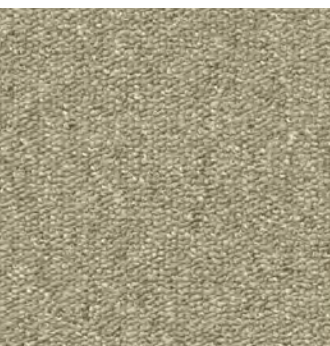
Textile or felt backing

Find technical details on  
[www.fletcocarpets.com](http://www.fletcocarpets.com)



Ex-dono Quartet - col. 180

Ex-dono Quartet - col. 750



393100



393120



393150



393180



393260



393300



393320



393330



393340



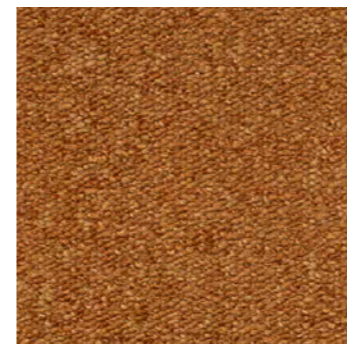
393350



393380



393450



393550



393660



393750



393850

# Nordic Living

A stylish flat woven carpet in a bouclé look, available in 17 harmonious colors varying in scales of green, grey classic brown and beiges. It also includes a couple of more vibrant colors for the more bold interiors. Custom colors from +400 m<sup>2</sup>.

## Selected references:

**Det Norske Veritas**  
Oslo, Norway (Corporate)

**Selsdon Park Hotel & Golf Club**  
Croydon, England (Hospitality)

**Evotec SE**  
Hamburg, Germany (Corporate)

## Recommended installation:



© Broadloom 400 cm width

■ Tiles 50 x 50 cm

100% PA 6.6 Ascent Ultron®

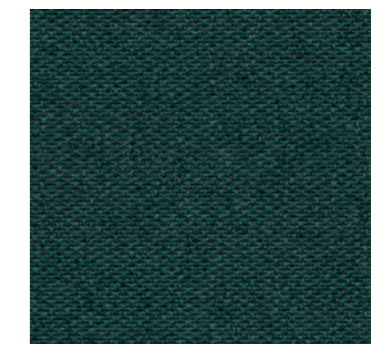
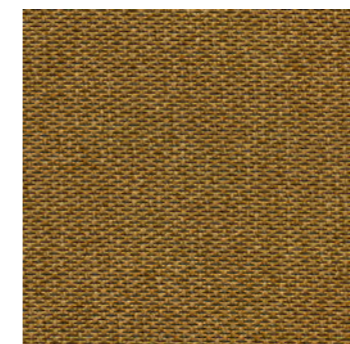
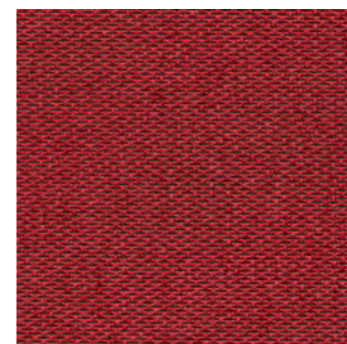
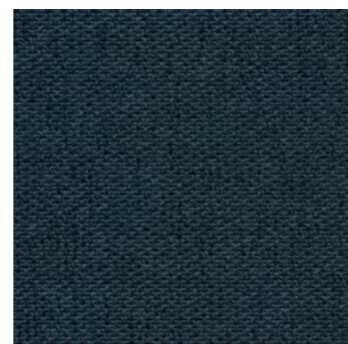
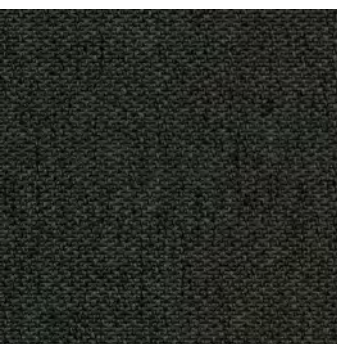
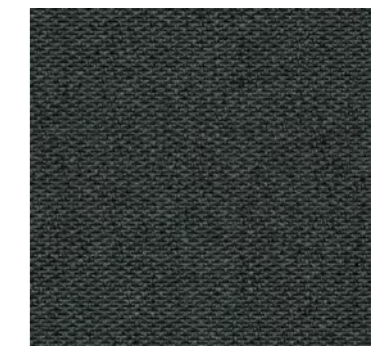
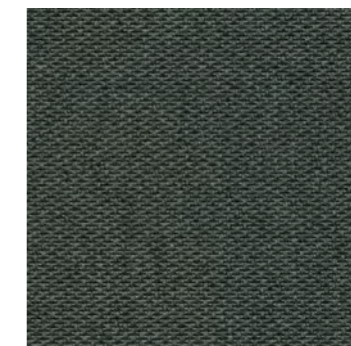
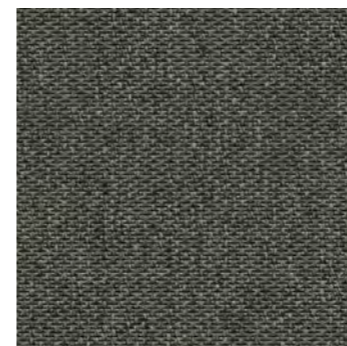
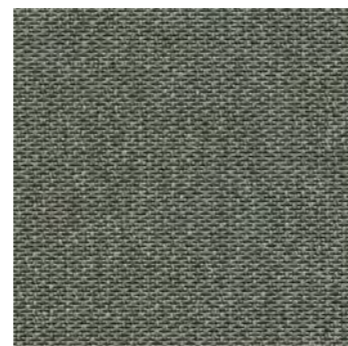
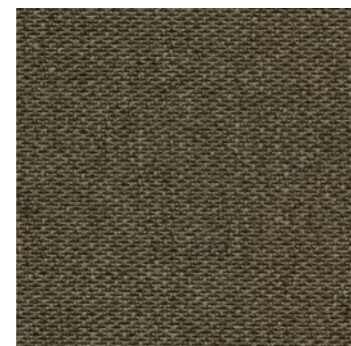
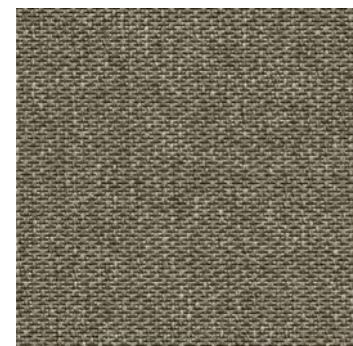
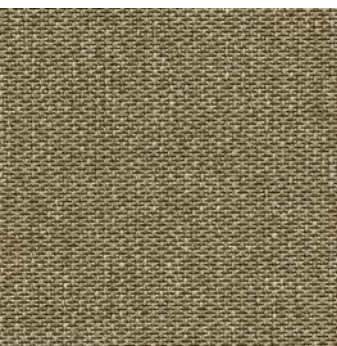
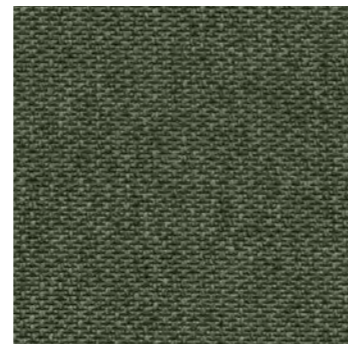
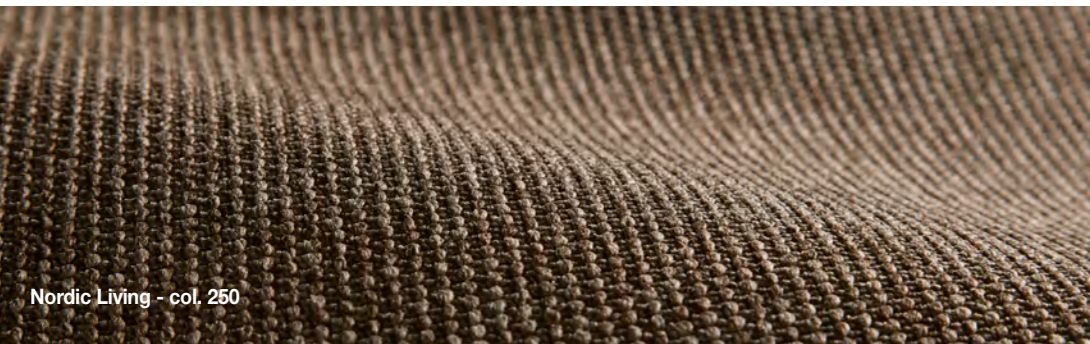
100% free of Bitumen, PVC and Latex

Continued dyed

32 Commercial - general

Textile or felt/TEXtiles® backing

Find technical details on  
[www.fletcocarpets.com](http://www.fletcocarpets.com)



# Zenith

The hardwearing tufted cut pile Zenith provides a soft and exclusive look and has exceptionally good acoustic properties. Available in 18 different colors. Custom colors from +400 m<sup>2</sup>.

## Selected references:

**Citroën**  
Aalborg, Denmark (Corporate)

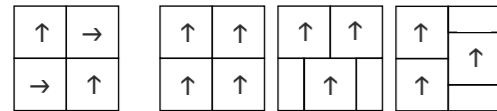
**McLaren**  
Woking, England (Corporate)

**CPH Airport**  
Kastrup, Denmark (Corporate)

**Oslo Nye Teater**  
Oslo, Norge (Corporate)

**Urban Creme Hotel**  
Prague, Czech Republic (Hospitality)

## Recommended installation:



Recommended

© Broadloom 400 cm width

■ Tiles 50 x 50 cm

100% PA 6.6 Invista  
Antron® Brilliance™

100% free of Bitumen, PVC  
and Latex

Continued dyed

33 Commercial – heavy

Find technical details on  
[www.fletcocarpets.com](http://www.fletcocarpets.com)



Zenith - col. 870



Zenith - col. 350



371150



371210 / T371210



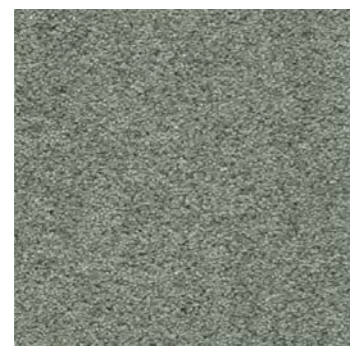
T371220



371260 / T371260



371280 / T371280



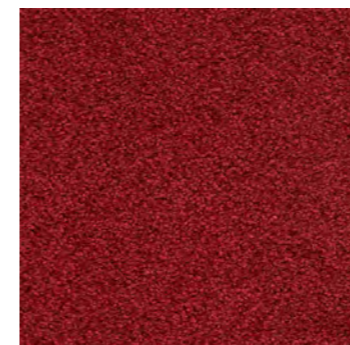
371330 / T371330



371350 / T371350



371380 / T371380



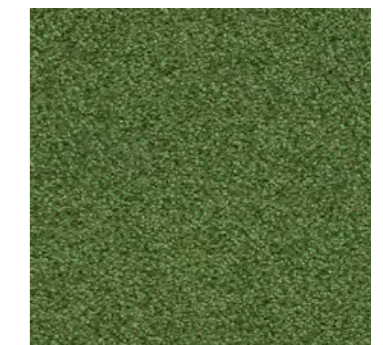
371600 / T371600



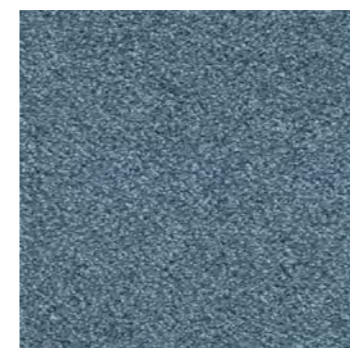
371650 / T371650



371680 / T371680



371740 / T371740



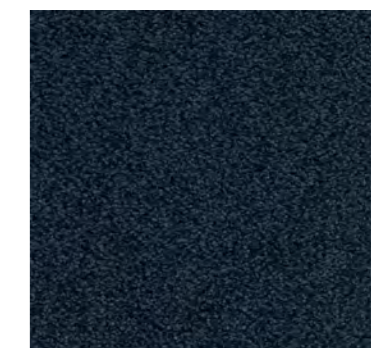
371800 / T371800



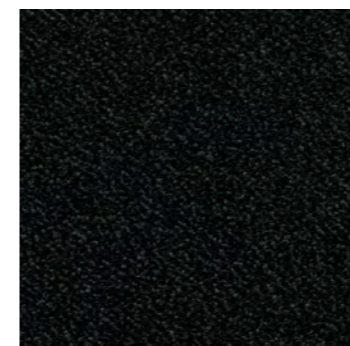
371850 / T371850



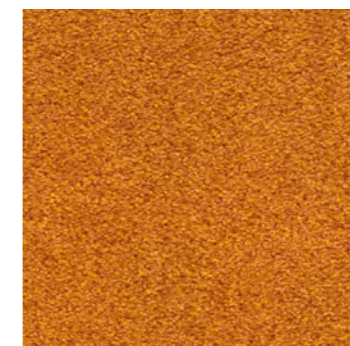
371870 / T371870



371880 / T371880



371390 / T371390



371480 / T371480

# Sebastian Wrong by Fletco®

Based on our NORDIC carpet tiles, Renowned British designer Sebastian Wrong has designed 9 different shapes and curated 18 stylish colors for a carpet concept that inspires creativity and gives freedom to design a personalized flooring solution. Numerous laying options. Mix and match forms and colors for an imaginative carpet solution. Custom colors from +400 m<sup>2</sup>.

## Selected references:

**Scott & Weber Office Center s.r.o**  
Prague, Czech Republic (Corporate)

**Georgetown Day School**  
Washington D.C., USA (Education)

**Playtech**  
Tallinn, Estonia (Corporate)

**Rabobank**  
Zaltbommel (Amsterdam), Netherlands (Corporate)

**Hotel Excelsior**  
Dubrovnik, Croatia (Hospitality)

Tiles: 9 different shapes

100% PA 6.6 Ascend Ultron®

100% free of Bitumen, PVC and Latex

Continued dyed

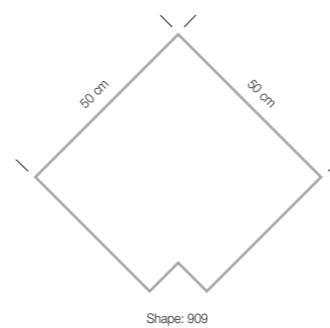
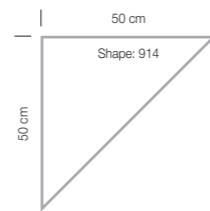
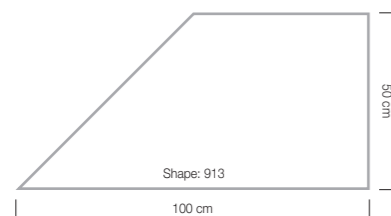
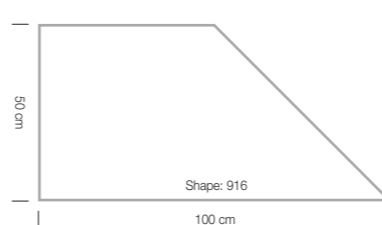
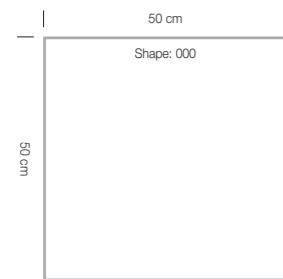
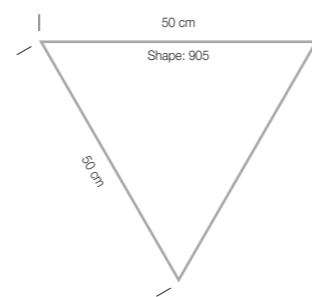
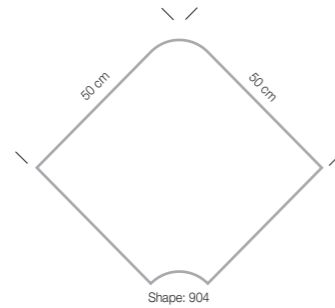
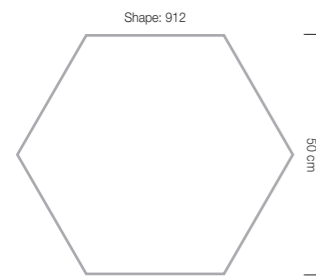
33 Commercial – heavy

Find technical details on [www.fletcocarpets.com](http://www.fletcocarpets.com)



Laser cut for highest precision

## Different shapes



Sebastian Wrong by Fletco – col. 940



# Sebastian Wrong by Fletco® – Colours

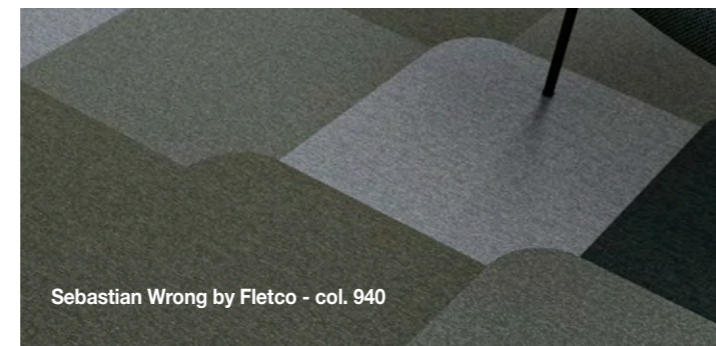
## Colours and combinations

Sebastian Wrong by Fletco is available in 18 different colours divided into five categories or 'families'. Some colours appear in more than one family category.

Principles for Product Codes (example):

Article: T850 001  
Colour: 380  
Shape: 904

Colours are representative and may vary from the actual product.



Sebastian Wrong by Fletco - col. 940



T850001740



T850001750



T850001120



T850001160



T850001240



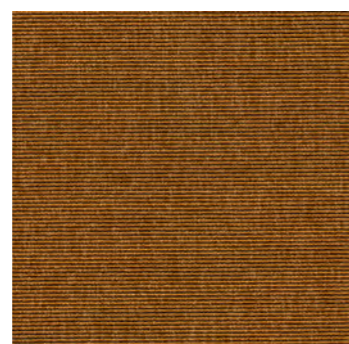
T850001260



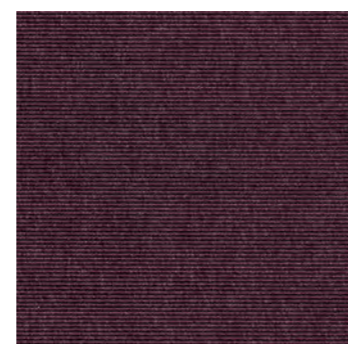
T850001380



T850001390



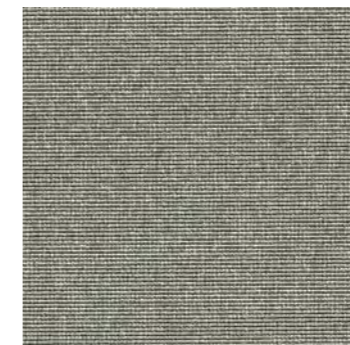
T850001500



T850001650



T850001290



T850001300



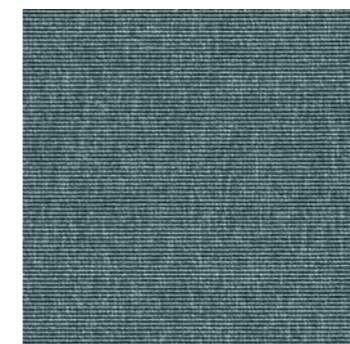
T850001340



T850001350



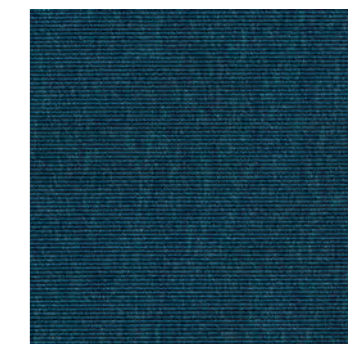
T850001770



T850001820



T850001850

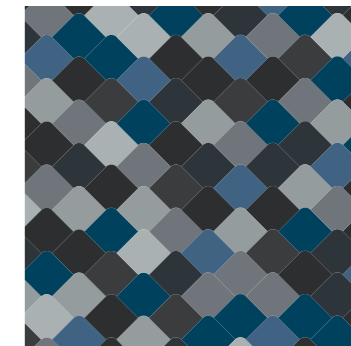


T850001860

## Examples of colour families

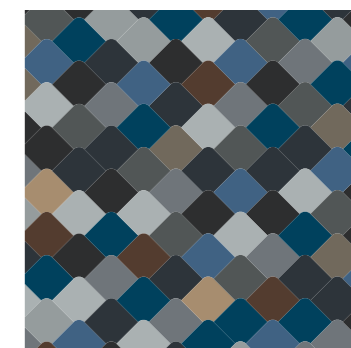
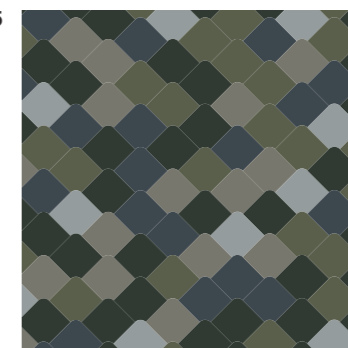
Please see below, the colour combinations made of either a single family or more families. Our colour families are only recommendations, you are of course free to choose the colours you want.

Family C1



Families C1 & C2

Family C5



Families C1, C2 & C3

# Art Weave by Fletco®

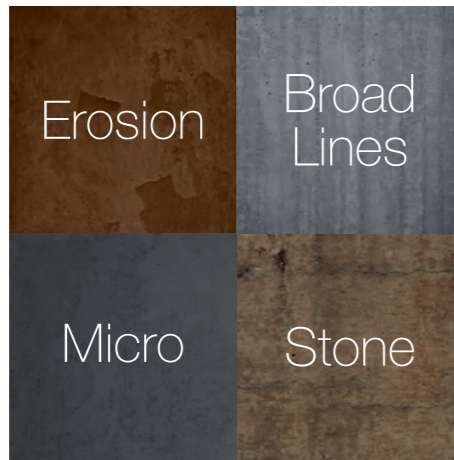
## ART WEAVE - the concept

Art Weave is created from a vision of bringing art literally down at floor level. A desire to create a different life on the floor. The design of Art Weave is inspired by the unique structures in different materials, which are interwoven into a living, organic, and graphic direction. Each expression comes in different colours – in four different shapes.

The expressions, colours and shapes makes it easy to create a living and unique flooring solutions.

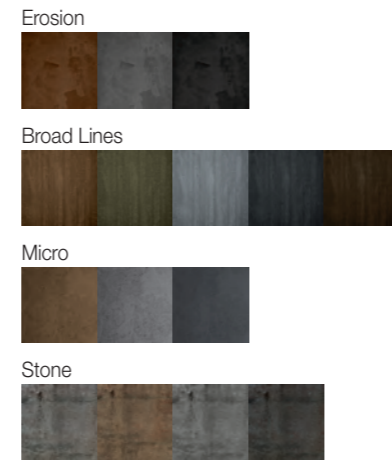
### 1 Select master tile

The artistic expression comes automatically when selecting Art Weave tiles. Select 1 of the 4 master tiles. Select the design which fits to your project.



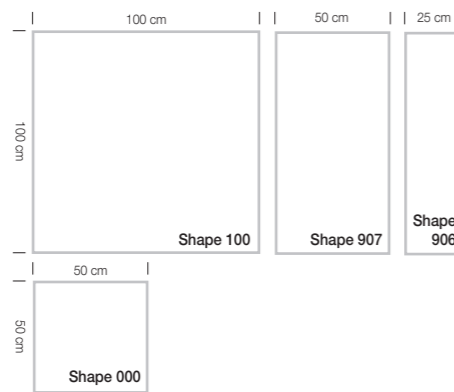
### 2 Select colour

Whether you stick to one colour or play with different colours, you can create unique flooring solutions in all environments.



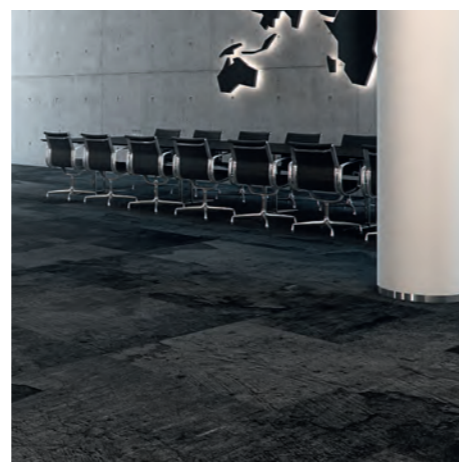
### 3 Select shape

Art Weave is made in 4 different shapes, which are laser cut out of a large master tile. Select shape(s).



### 4 Place randomly

To ensure a living, graphical and almost collage-like effect the pieces are not numbered. It is part of the design that the tiles are laid randomly.



Erosion

Broad Lines

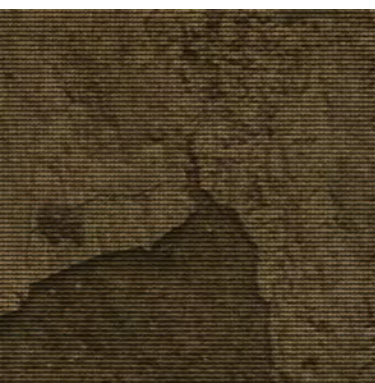
Micro

Stone

# Art Weave – Erosion



Erosion - col. 320 in shape 100 + 907



T800001250



T800001300



T800001320

Tiles: 50 x 50

100% PET Anvire FR®

Print

33 Commercial – heavy

rPET felt backing

Find technical details on [www.fletcocarpets.com](http://www.fletcocarpets.com)



# Art Weave – Broad Lines



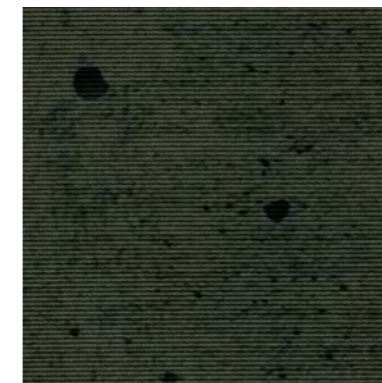
Broad Lines - col. 300 + 350 in shape 906 + 907

Selected references with Art Weave:

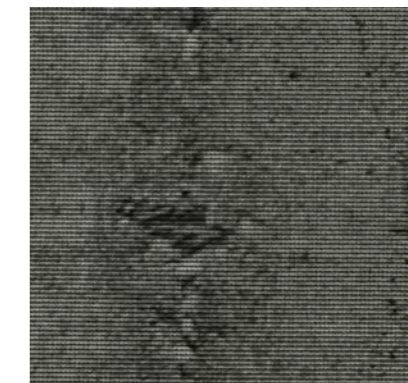
**Workland**  
Vilnius, Lithuania (Corporate)



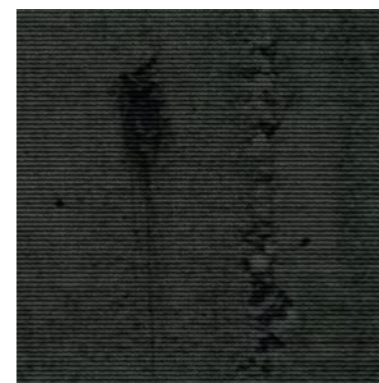
T800009150



T800009170



T800009300



T800009350



T800009450

# Art Weave – Micro



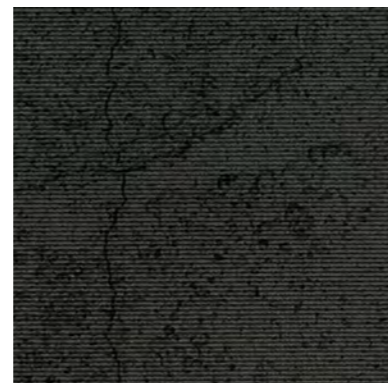
Micro - col. 200 in shape 907



T800006200



T800006300



T800006380

# Art Weave – Stone



Stone - col. 150



T800002150



T800002250



T800002300



T800002320



Stone - col. 300

# Layers by Sebastian Wrong

Layers by Sebastian Wrong is a carpet tile collection that includes 13 different digital printed colours and two different tile sizes: 25 x 100 cm planks and 50 x 50 cm tiles. You can mix the different colours and tile sizes as you like.

Selected references:

**Uber**  
Vilnius, Lithuania (Corporate)

■ Tiles: 50 x 50

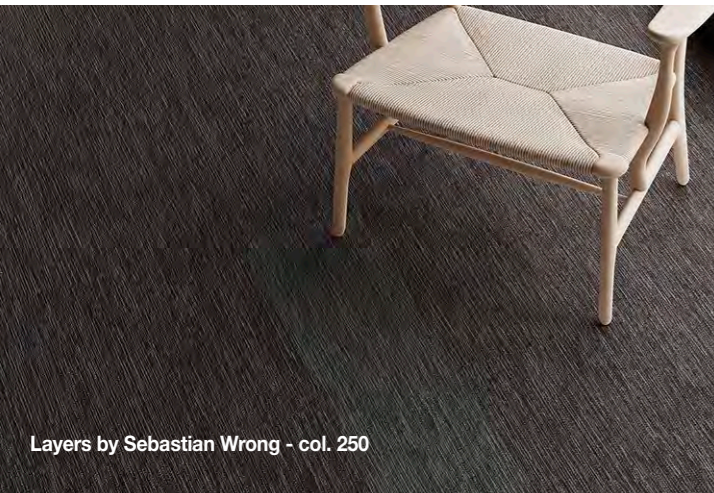
100% PET Anvire FR®

Print

33 Commercial – heavy

rPET felt backing

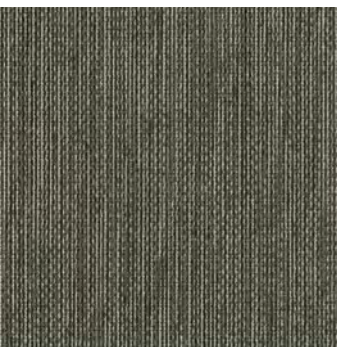
Find technical details on  
[www.fletcocarpets.com](http://www.fletcocarpets.com)



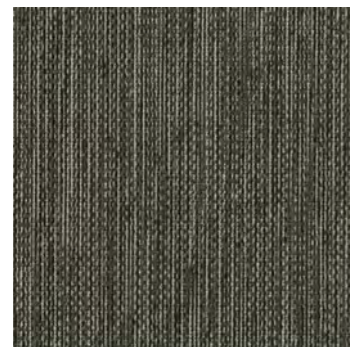
Layers by Sebastian Wrong - col. 250



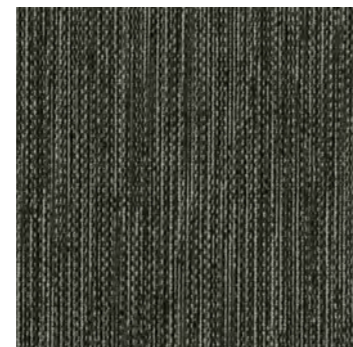
Layers by Sebastian Wrong – col. 250



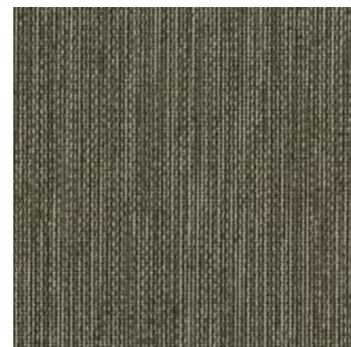
T851001100



T851001120



T851001150



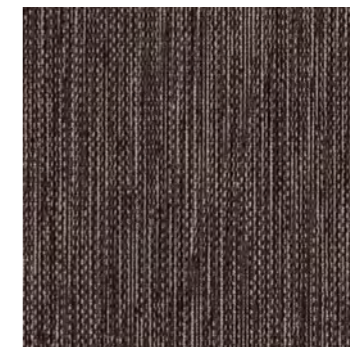
T851001200



T851001390



T851001400



T851001680



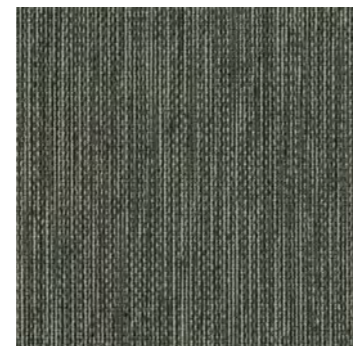
T851001700



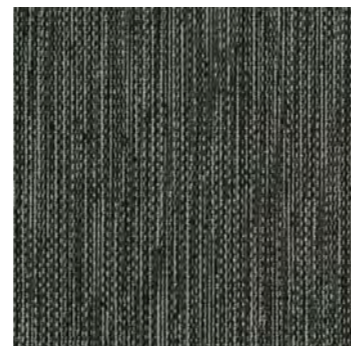
T851001220



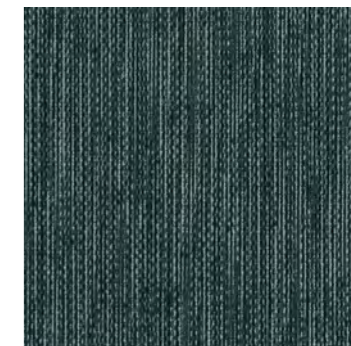
T851001250



T851001300



T851001320



T851001800

# LockTiles®

## Carpet tiles with broadloom appearance

LockTiles® is a patented laser cutting method. With carpet tiles cut in the LockTiles® shape, you can achieve a flooring surface with nearly invisible joints and with an exceptionally good dimensional stability. The laser cut edges interlock around each other and fit together in all directions. The tiles are easy to replace, should a small area be soiled beyond cleaning.

### Available in COM 1000 and Nordic

To achieve the broadloom look with carpet tiles, this places great demands to the density and pile height of the carpet. The LockTiles® cut is currently available in COM 1000 and Nordic. Surcharge apply.

### The advantages of LockTiles®

- Allows carpet tiles to be installed in same direction, obtaining a broadloom effect with nearly invisible joints.
- Laser cut edges guarantee a perfect fit and helps prevent fraying.
- Single tiles can easily be replaced.
- The tiles cannot be installed incorrectly.

### Free demo box

Order a free demo box of our LockTiles® from our website.

### Selected references:

**Notariskantoor Jadoul, Kestelyn & Genicot**  
Tervuren, Belgium (Corporate)

**Intesa Bank**  
Milano, Italy (Corporate)

**NBBC**  
Drammen, Norway (Corporate)

**PwC CityLife, Il Curvo (Liebeskind Tower)**  
Milan, Italy (Corporate)

**GASA Group Denmark**  
Odense, Denmark (Corporate)

LockTiles® 50 x 50 cm

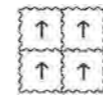
Available: COM 1000 & Nordic

33 Commercial – heavy

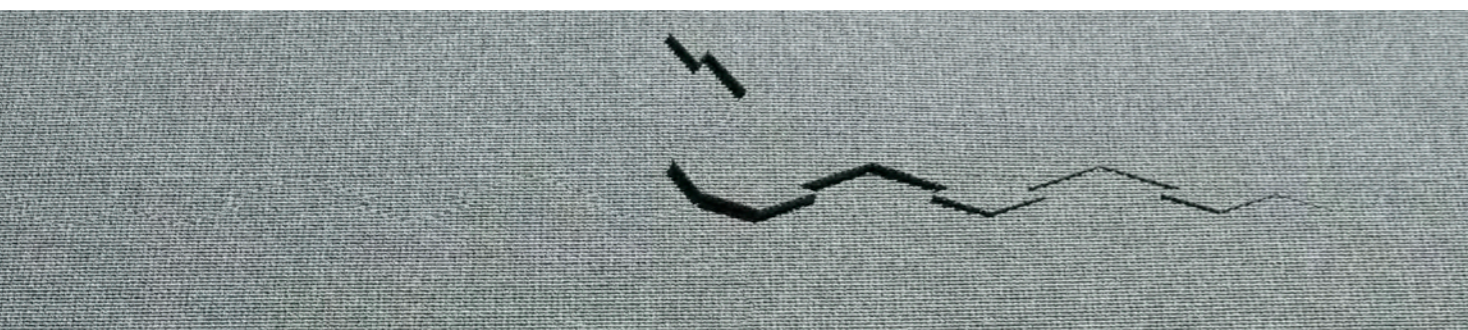
Find technical details on  
[www.fletcocarpets.com](http://www.fletcocarpets.com)



### Recommended installation:



Produced to order only



## Design awards



# ZigZag-Tiles®

## Carpet tiles, which look like a broadloom

ZigZag®, the pre-decessor of LockTiles®, is another laser cutting method that we offer. Carpet tiles laser cut in the shape of ZigZag-TILES, the tiles can be installed ashlar obtaining the look of a broadloom with less visible joints. As with all carpet tile installations, the tiles are easy to replace if need be.

### Available in COM 1000 and Nordic

Installing carpet tiles ashlar, places great demands to the density and pile height of the carpet. The ZigZag® cut is currently available in COM 1000 and Nordic. No surcharges apply.

### The advantages of ZigZag-TILES®

- Allows carpet tiles to be installed in same direction, obtaining a broadloom look with less visible joints.
- Laser cut edges guarantee a perfect fit and helps prevent fraying.
- Single tiles can easily be replaced.

### Selected references:

#### Borislavka Centrum

Prague, the Czech Republic (Corporate)

#### Swissgrid

Aarau, Switzerland (Corporate)

#### SML

Redlham, Austria (Corporate)

■ ZigZag-Tiles® 50 x 50 cm

Available: COM 1000 & Nordic

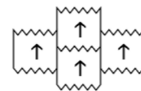
33 Commercial – heavy

Pass class 33 wear test 6x

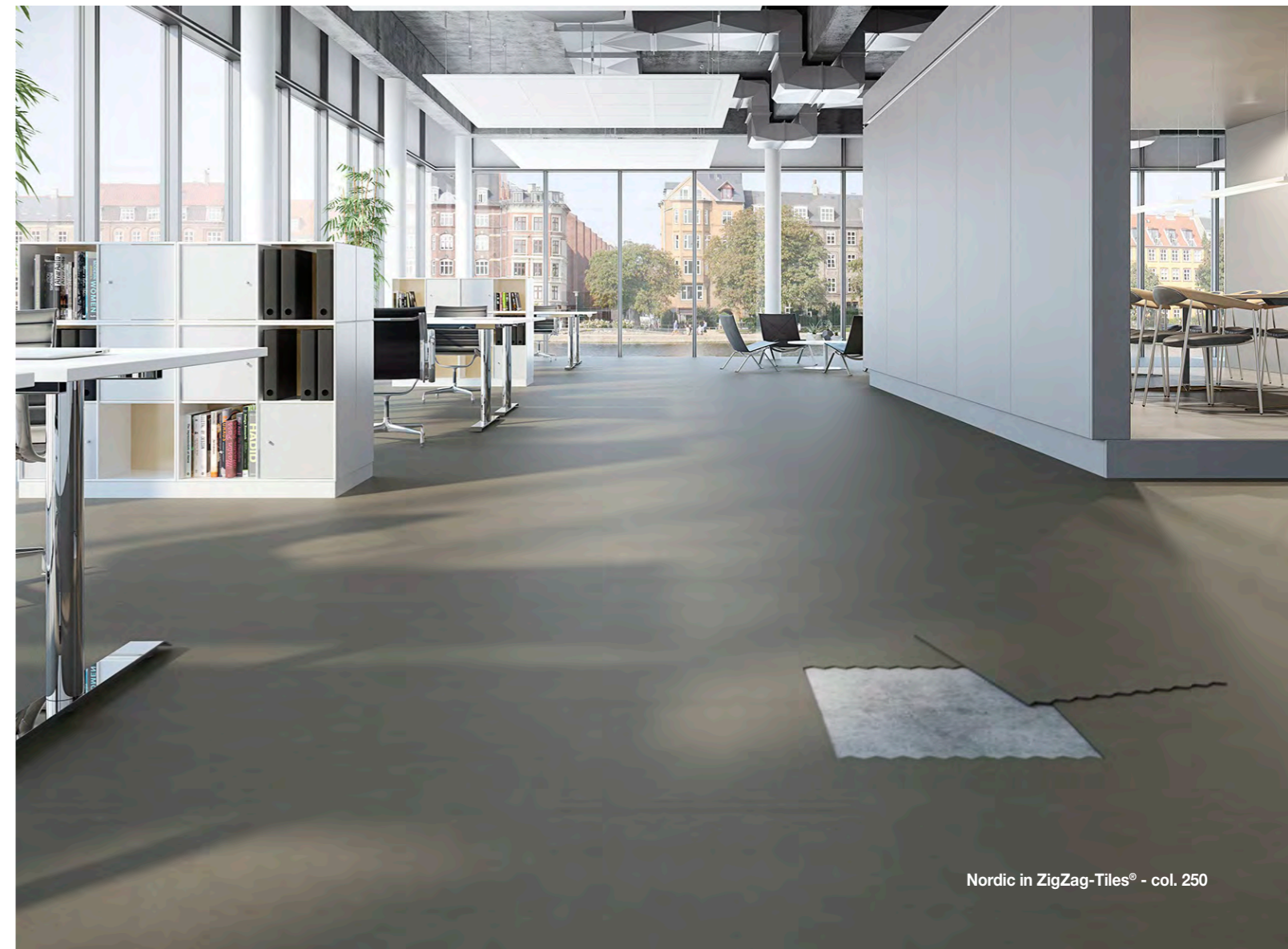
Find technical details on  
[www.fletcocarpets.com](http://www.fletcocarpets.com)



### Recommended installation:



Produced to order only



Nordic in ZigZag-Tiles® - col. 250

## Design awards



# Caring for the next generation

## Creating carpets in a sustainable process

**At Fletco Carpets we care about both our climate and the environment. We are committed to continuously reducing our negative Co<sub>2</sub> footprint on the planet and people – without compromising the high quality that has cemented our reputation for now 40+ years. We are in favor of a sustainable future and support the green transition with ongoing sustainable initiatives.**

Sustainability is key to all our product development. We lead the field and meet or surpass the authorities' official or certifying bodies' carpet manufacturing requirements. Wherever possible, we will engage in research and development into new methods and materials.

E.g. one particular environmental problem that applies to carpet tiles generally is the backing, which traditionally contained PVC, Latex or bitumen. Thanks to our new production technology, the backing of all Fletco carpet tiles are allergy-friendly and guaranteed free of these and other harmful chemical substances

Our rugs are designed and produced with loving care. A loving concern for the environment, with the lowest possible Co<sub>2</sub> emissions at our factory in Bording, Denmark, where we strive for the highest quality in production with European yarns/materials and minimal transport routes.

Fletco's carpets have a maximum lifespan, both in terms of the long-lasting design, but in particular in relation to the production method of the flat-woven qualities, which with the right maintenance often have a durability of over 15 years.



## Eurofins Gold certified

### **Ecological product – free of bitumen, PVC and other environmentally-critical substances:**

We care for the indoor environment and air quality, so the carpets from Fletco are e.g. odour-neutral and dust-free, and live up to the carpet industry's highest standards. All the Fletco Carpets are therefore Eurofins Indoor Air Comfort GOLD certified.

Eurofins Indoor Air Comfort GOLD is the best assurance that our products fulfil low product emissions requirements and signifies our brand's focus on quality and contribution to a healthy indoor environment.

Products certified with the higher level "Indoor Air Comfort GOLD - show additional compliance of product emissions with the criteria of many of the voluntary specifications issued by most relevant ecolabels and similar specifications in the EU and requirements for sustainable building certifications.

Under the umbrella of this best-in-class certification, you find e.g. Cradle to Cradle, Danish Indoor Climate Label (Emission Class 1), M1 and Nordic Swan. Indoor Air Comfort Gold certificates are directly accepted as proof from programs for sustainable buildings like BREEAM international and LEED.



